

Supporting Leicester Fertility Centre



Leicester Fertility Centre
Caring at its best

Who are we?

Leicester Fertility Centre was established in 1990 at the Leicester Royal Infirmary. Since then, the clinic has seen many big advances and changes within the field. These include the formation of our governing body- the Human Fertilisation & Embryology Authority (HFEA) and the use of new techniques such as Intracytoplasmic sperm injection (ICSI).

We provide high quality treatment for both NHS and private patients, and offering a range of fertility options.

Our aim

Simply to give all patients the opportunity to have a family, now or in the future, by offering a range of high quality treatments within a safe, friendly environment.

Our patients

Infertility can affect anyone of any age and from any walk of life. The majority of patients we treat are young, fit and healthy.

The inability to have a child can have a major and damaging effect for not only the person undergoing treatment but also their friends, family and wider community. It often leads to isolation, feelings of failure, depression and relationship breakdown.

Our patients are often further isolated as infertility is a topic which people don't talk about.

At Leicester Fertility Centre, we understand this and work hard to ensure all our patients and couples are supported before, during and after treatment, whatever the outcome.

We also work along side cancer services to enable patients to plan for their future; giving them control at a time when they need it most.

Leicester Fertility Centre – why raise money?

Although the NHS provides excellent clinical facilities, we always need additional equipment to help improve the quality of care for our patients. This includes making the intimate and often stressful process less clinical by improvement of the waiting and treatment areas.

Infertility is one of the newest and fastest growing sciences in medicine, as such we often struggle to keep up with major advances in equipment and embryo culture, which are proven to directly benefit patients and lead to increased pregnancy rates, giving more families the chance to happen.



An embryo at Blastocyst stage

What we want to do:

Improve the clinic and facilities

The Leicester Fertility Centre team are dedicated to the continual improvement of the unit and treatments they offer. The money raised will be used to buy equipment not funded by the NHS and improve the overall look and feel of the unit.

For more information about specific items please contact us on: 0116 258 5922

What can you do to help ?

If you would like to support the Leicester Fertility Centre, for example by making a donation, or sponsoring one of our fundraising events, please contact us at:

Leicester Fertility Centre,
c/o Leicester Hospitals Charity,
Fundraising Department, Belgrave House, LGH,
Gwendolen Road, Leicester LE5 4PW.
Telephone 0116 258 8709.

Donations can be made by cheque payable to
'Leicester Hospitals Charity- Fertility Centre'

**We do hope you will be able to join us in
supporting
Leicester Fertility Centre**



Leicester Fertility Centre

Caring at its best



Leicester Hospitals Charity
raises funds for University Hospitals of Leicester NHS Trust

DONATION SLIP

(Detach and send with your donation to the address overleaf)

Name.....

Address

.....
Postcode.....

**Increase the value of
your gift by 25%!**

giftaid it

If you are a UK taxpayer we can claim an extra 25p for every pound you donate from HMRC under the Gift Aid scheme. This won't cost you a penny!

Please note: you must pay an amount of income tax or capital gains tax in the tax year at least equal to the amount that all charities and CASCs you donate to, will reclaim on their gifts in that tax year (currently 25p for every £1 given). Gift Aid will be applied to all future donations until notified otherwise.

Signed.....

Date.....

I am a UK Taxpayer and would like
Gift Aid to be claimed on my donation

I wish to donate the sum of £..... to the
Leicester Hospitals Charity Ward or Department:

Method of Donation:

- Cheque (payable to Leicester Hospitals Charity)
 Credit / Debit Card Standing Order
 Bank Transfer Other

For donations via card, bank transfer or standing order, please contact the fundraising office on 0116 258 8709. Any donation you make will benefit the department or appeal of your choice or can be directed to the area of greatest need.

Request for Information

If you would like any further information, please tick the relevant box below and return your slip to the address overleaf. Please send me information about:

- Leaving a gift in my will to Leicester Hospitals Charity
 Your latest appeal(s) How I can fundraise for you
Other

The information you provide will only be used by University Hospitals of Leicester NHS Trust and will not be passed on to any third parties.

... Cut off slip here

LEICESTER

HOSPITALS CHARITY

enhancing your hospitals



RAISING MONEY FOR:

**LEICESTER ROYAL INFIRMARY
LEICESTER GENERAL HOSPITAL
GLENFIELD HOSPITAL
LEICESTER CHILDREN'S HOSPITAL**

**Leicester Hospitals Charity
Fundraising Department
Belgrave House
LGH, Gwendolen Road
Leicester
LE5 4PW**

Registered Charity No 1056804

0116 258 8709

Email: fundraising@uhl-tr.nhs.uk

www.leicestershospitals.nhs.uk/fundraising

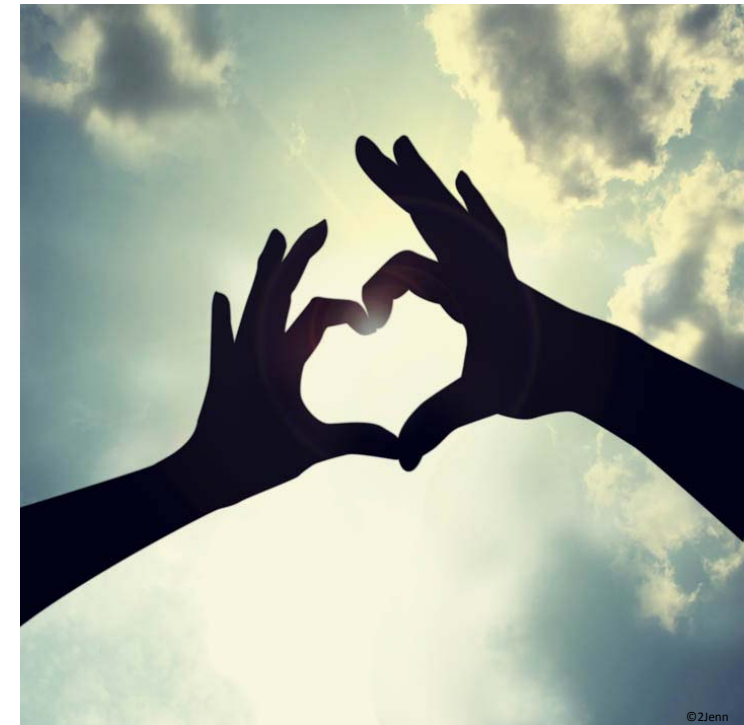
Supporting

Leicester Fertility Centre



Leicester Fertility Centre

Caring at its best



raising funds for
University Hospitals of
Leicester NHS Trust

Registered Charity No 1056804